

REVISION

0	DF	S HILLERICH
2/14/2007 ECN-71430 ISSUE FOR REVIEW.		
1	CW	C FAITH
3/22/2007 ECN-73527 SHEET 2, ADD RECOMMENDED FOOTPRINT LAYOUT VIEW		

NOT RELEASED
FOR PRODUCTION

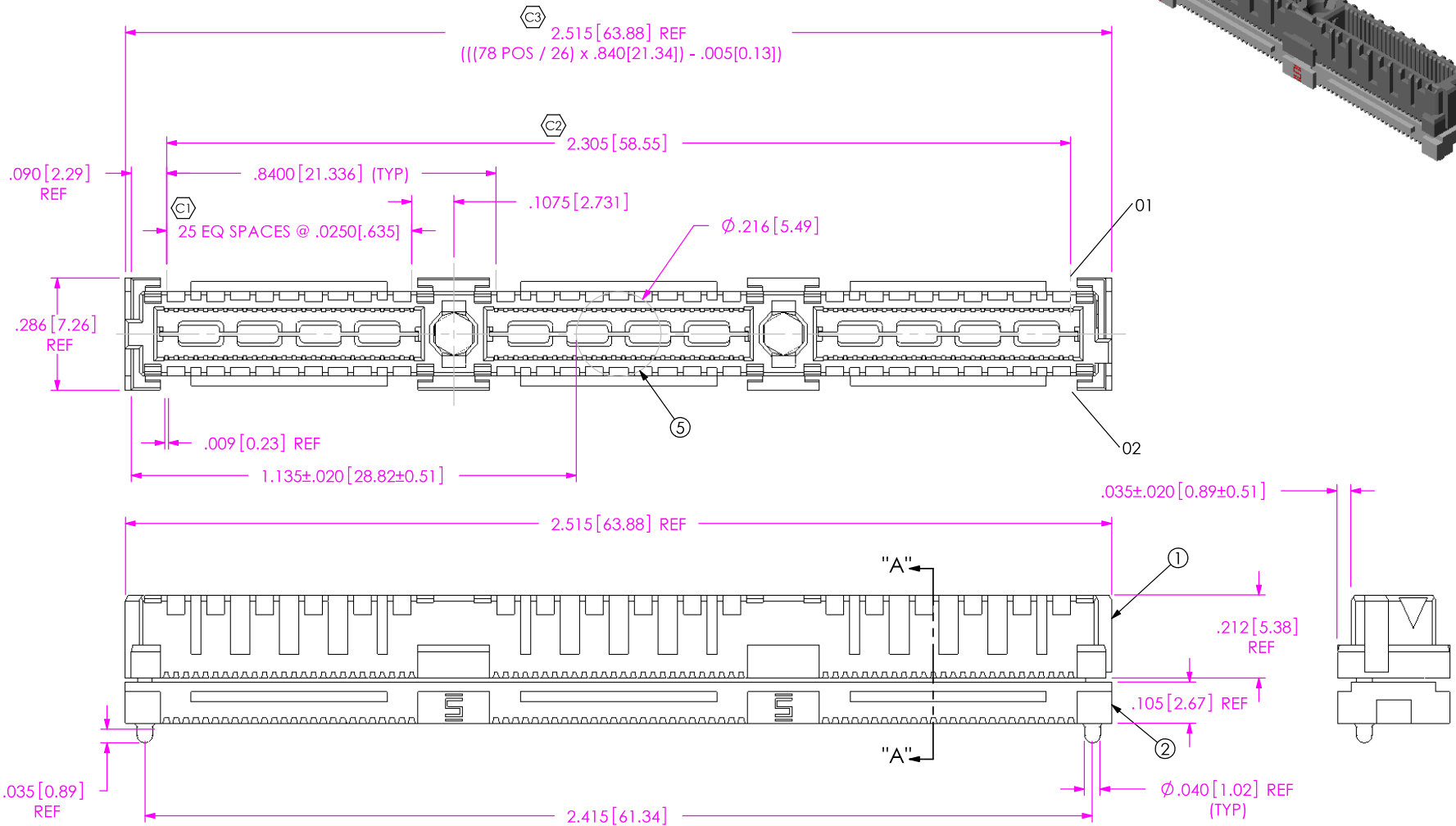
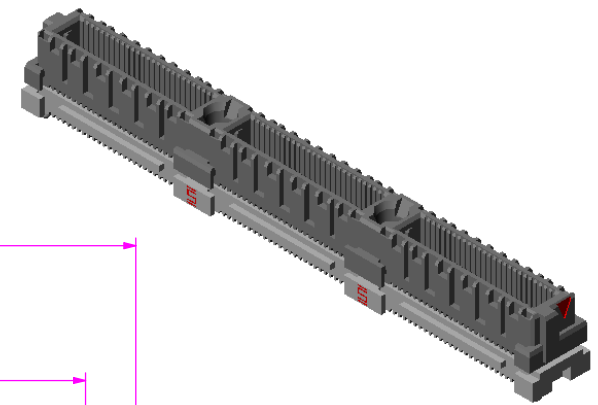
USE FOR QUOTING, PRELIMINARY
DESIGN, PROTOTYPING AND
INFORMATIONAL PURPOSES ONLY

ACCEPTANCE OF DRAWING
ACCEPTED WITH DEVIATIONS LISTED

DATE: _____
COMPANY: _____
CUSTOMER SIGNATURE
PRINTED NAME
PHONE NO: _____
FAX NO: _____

NOTES:

- .342 STACKER HEIGHT NOT AVAILABLE AS STANDARD.
- ⊕ REPRESENTS A CRITICAL DIMENSION.
- BURR ALLOWANCE: .0015[0.038] MAX.
- MINIMUM PUSHOUT FORCE: SIGNAL: .5 LB, GROUND: 1 LB.
- MAX VARIANCE OF .002[0.05].
- DIMENSION APPLIES TO CONTACTS & GROUND PLANES.
- GROUND PLANE PRESS HEIGHT MUST BE .003[0.08] LESS THAN THE MAX HEIGHT OR .001[0.03] GREATER THAN THE MINIMUM HEIGHT OF THE TERMINAL.
- PARTS TO BE PACKAGED IN TRAYS.



ITEM NO.	PART NUMBER	QUANTITY	MATERIAL
1	QMSS-26-05.75-D-03	1.0000	VECTRA E130i, COLOR: BLACK
2	ASP-129634-03-B	1.0000	VECTRA E130i, COLOR: BLACK
3	ASP-129635-02-P-S	156.00	PHOS BRONZE, 521 EXTRA SPRING TEMPER
4	ASP-129636-02-P-L	3.0000	PHOS BRONZE, 510 FULL HARD TEMPER
5	K-500-300	1.0000	POLYAMIDE FILM (KAPTON)

UNLESS OTHERWISE SPECIFIED,
DIMENSIONS ARE IN INCHES.
TOLERANCES ARE:
DECIMALS ANGLES
.XX: ±.01[.3]
.XXX: ±.005[.13]
.XXXX: ±.0020[.051]

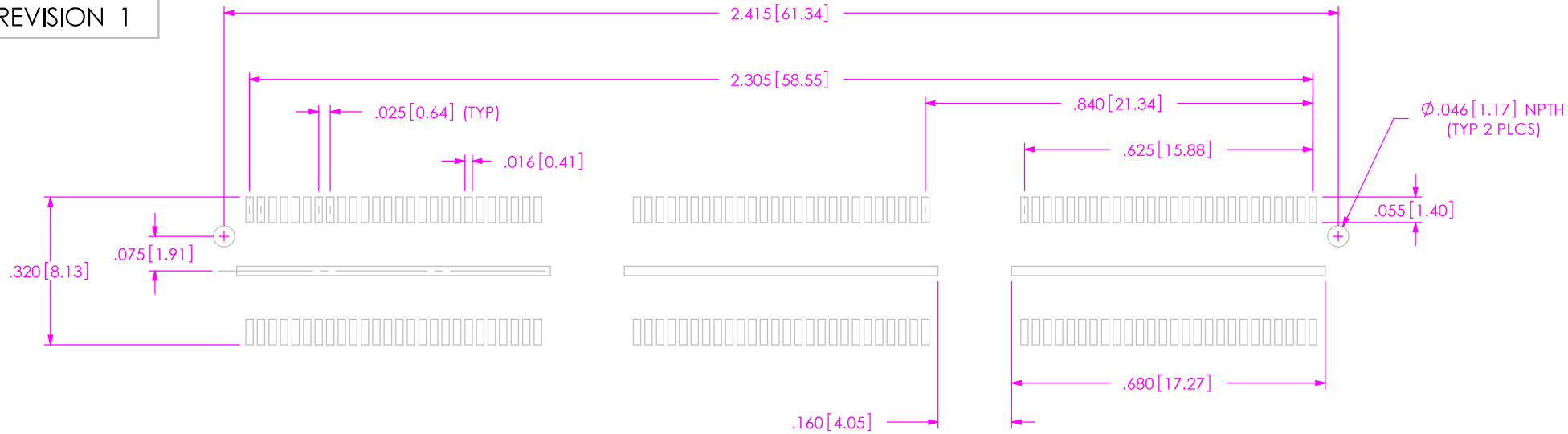
PROPRIETARY NOTE
THIS DOCUMENT CONTAINS INFORMATION
CONFIDENTIAL AND PROPRIETARY TO
SAMTEC, INC. AND SHALL NOT BE REPRODUCED
OR TRANSFERRED TO OTHER DOCUMENTS OR
DISCLOSED TO OTHERS OR USED FOR ANY
PURPOSE OTHER THAN THAT WHICH IT WAS
OBTAINED WITHOUT THE EXPRESSED WRITTEN
CONSENT OF SAMTEC, INC.



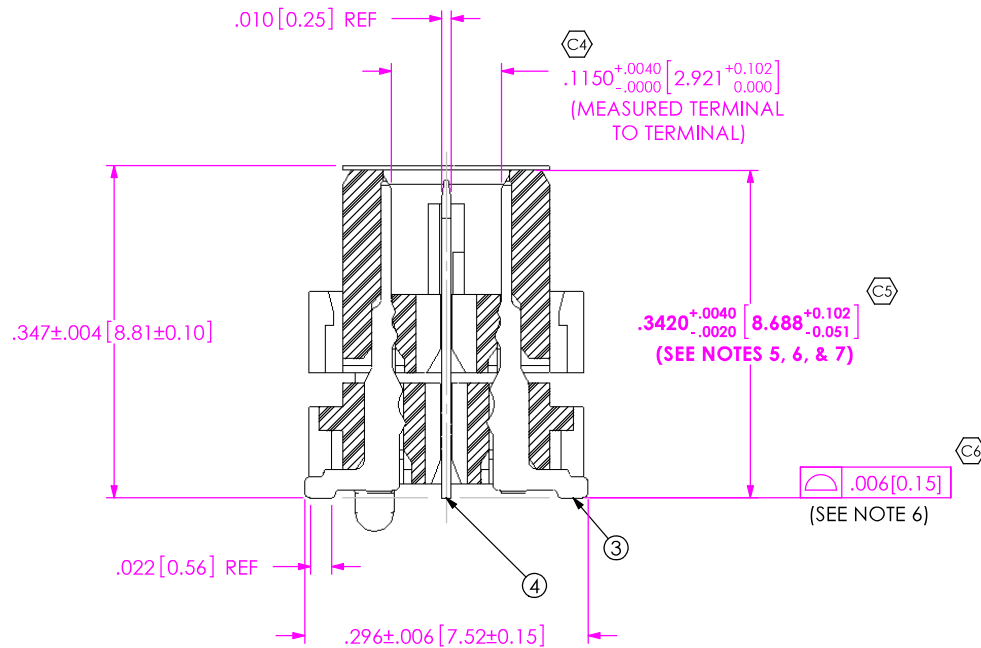
520 PARK EAST BLVD, NEW ALBANY, IN 47150
* PHONE: 812.944.6733 FAX: 812.948.5047
e-Mail: INFO@SAMTEC.COM CODE: 55322

DO NOT SCALE DRAWING SHEET SCALE: 2.5:1
PLATING:
CONTACT AREA: .000030 GOLD OVER .000050 NICKEL
REMAINDER: .000200 REF TIN OVER .000050 NICKEL

DESCRIPTION:	ELEVATED QMS ASSM
DWG. NO.	ASP-129637-03
BY: D FRALEY	02/14/2007 SHEET 1 OF 2

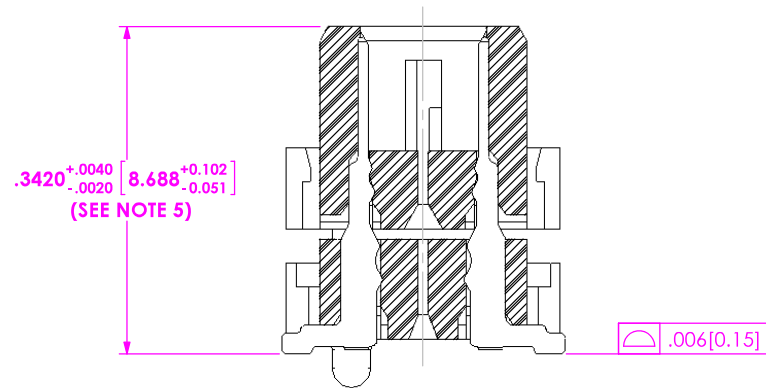


RECOMMENDED PCB LAYOUT



SECTION "A"- "A"
SCALE 5 : 1

IN-PROCESS



PROPRIETARY NOTE

THIS DOCUMENT CONTAINS INFORMATION CONFIDENTIAL AND PROPRIETARY TO SAMTEC, INC. AND SHALL NOT BE REPRODUCED OR TRANSFERRED TO OTHER DOCUMENTS OR DISCLOSED TO OTHERS OR USED FOR ANY PURPOSE OTHER THAN THAT WHICH IT WAS OBTAINED WITHOUT THE EXPRESSED WRITTEN CONSENT OF SAMTEC, INC.

SAMTEC

520 PARK EAST BLVD, NEW ALBANY, IN 47150
* PHONE: 812.944.6733 FAX: 812.948.5047
e-Mail: INFO@SAMTEC.COM CODE: 55322

SHEET SCALE: 5:1

DESCRIPTION: ELEVATED QMS ASSM

DWG. NO. ASP-129637-03

BY: D FRALEY 02/14/2007 SHEET 2 OF 2