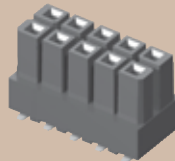


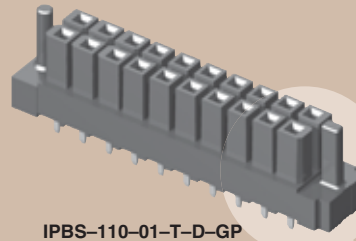


(4,19mm) .165"
IPBS SERIES

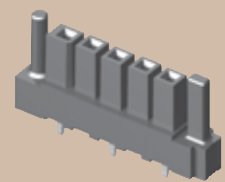
IPBS-105-02-T-D



IPBS-110-01-T-D-GP



IPBS-105-01-T-S-GP



ISOLATED CONTACT POWER HEADER

SPECIFICATIONS

For complete specifications see www.samtec.com?IPBS

Insulator Material:
Black Liquid Crystal Polymer



Contact Material:
Phosphor Bronze



Plating:

Sn over 50µ" (1,27µm) Ni

Operating Temp Range:
-40°C to +105°C

Insertion Depth:
(6,15mm) .242" to (7,24mm) .285"

Wiping Distance:
(0,38mm) .015" min.

Insertion Force:
14oz (3,89N) avg.

Withdrawal Force:
10oz (2,78N) avg.

Voltage Rating:
725 VAC

RoHS Compliant:
Yes

Processing:

Max Processing Temp:
230°C for 60 seconds, or 260°C for 20 seconds 3x

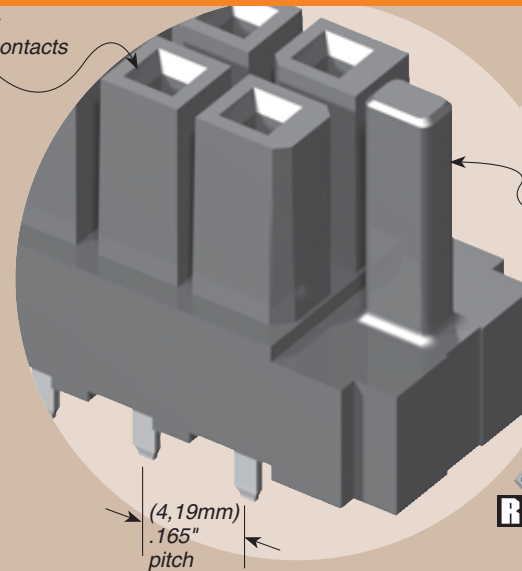
Lead-Free Solderable:
Yes

Mates with:
IPBT

Individually shrouded contacts

Optional polarized guide posts

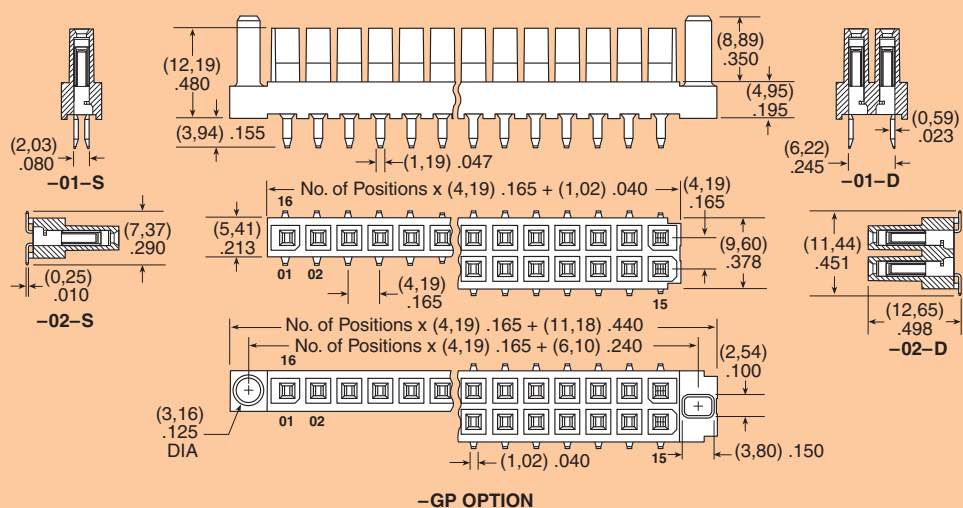
| CURRENT RATING | |
|---------------------------|-----------|
| AMBIENT TEMP | IPBT/IPBS |
| 20°C | 11.3A |
| 40°C | 10A |
| 60°C | 8A |
| 75°C | 6.7A |
| 6 POSITIONS (2x3) POWERED | |



(4,19mm) .165" pitch



| IPBS | 1 | NO. OF POSITIONS PER ROW | LEAD STYLE | PLATING OPTION | ROW OPTION | OPTION |
|------|---|--|--|-------------------|--|---------------------|
| | | 02, 03, 04, 05, 08, 10, 15 (-D only) | -01 = Standard Power -02 = Standard Power Surface Mount | -T = Matte Tin | -S = Single Row -D = Double Row | -GP = Guide Post |
| | | 02, 03, 04, 05 (-S only) (Call Samtec for other sizes) | | | | |



Note: Some lengths, styles and options are non-standard, non-returnable.

Due to technical progress, all designs, specifications and components are subject to change without notice.

WWW.SAMTEC.COM